

**FJC Bankruptcy Courtroom Use Study
Report to the CACM Committee**

Technical Appendix 3

Analysis of Seasonal Variation in Courtroom Use

This page left blank intentionally.

Bankruptcy Courtroom Use Study

Examination of B-102 Data for Seasonality Effects

November 25, 2008

No seasonality effects were found in the three most recent years for which B-102¹ data were available (2005–2007). Figure 1 displays aggregated data spanning 2005–2007. Judges attending the Advisory Group Meeting at which this result was reported suggested that we examine data going further back in time, so we acquired data for three additional years (two years of which were usable).

Analysis of data spanning January 2003 through June 2008 still does not suggest that a seasonality effect is present **as expressed in B-102 data, which reflect time that judges spend in a courtroom**. This conclusion is based on a year-by-year analysis of summed time. The analysis was conducted by individual year because the effect of the Bankruptcy Abuse Prevention and Consumer Protection Act (BAPCPA) on filings makes aggregating data over the full time span unsuitable. BAPCPA's passage had the expected effect of reducing the overall time spent in the courtroom.

Year-by-year graphs of summed B-102 data appear below, in Figure 2 through Figure 6.

1. The bankruptcy courts use the B-102 form (Monthly Report of Trials and Other Activity) to report judges' courtroom activity to the Administrative Office of the U.S. Courts.

Figure 1

**Monthly Bankruptcy Judge Courtroom
Recorded for B-102 Reports**

2005-2007 B-102 Data

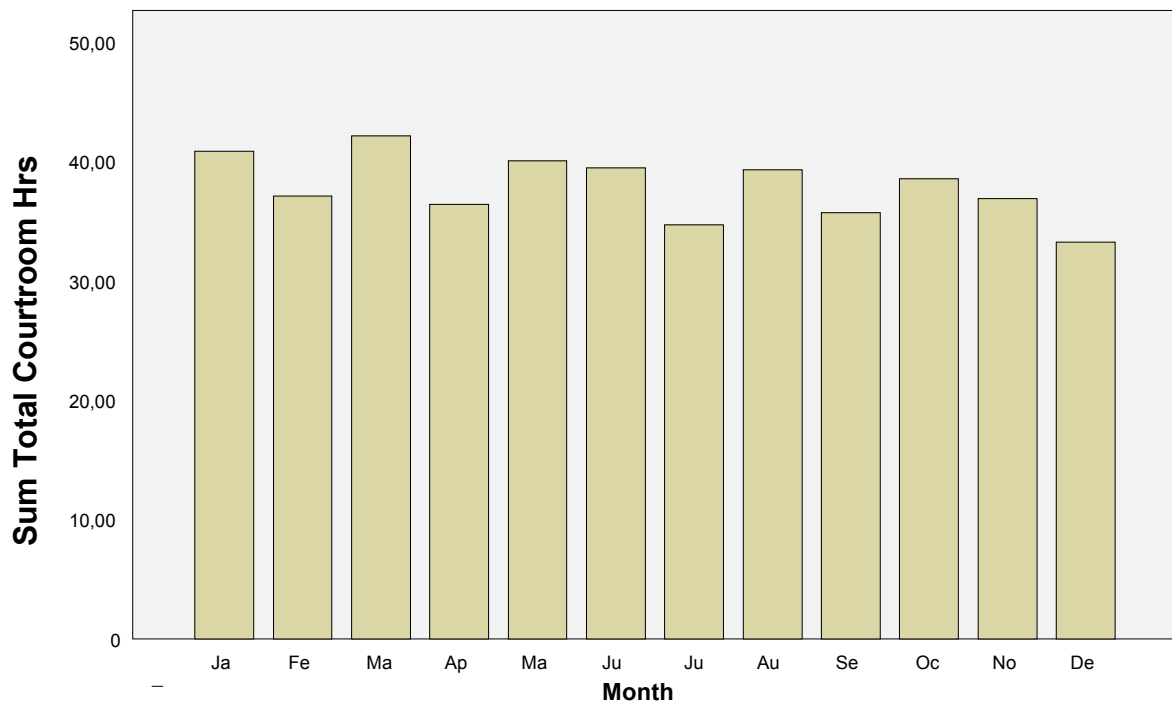


Figure 2

**Bankruptcy Judge Courtroom Use
Recorded for B-102 Reports**

2004 B-102 Data

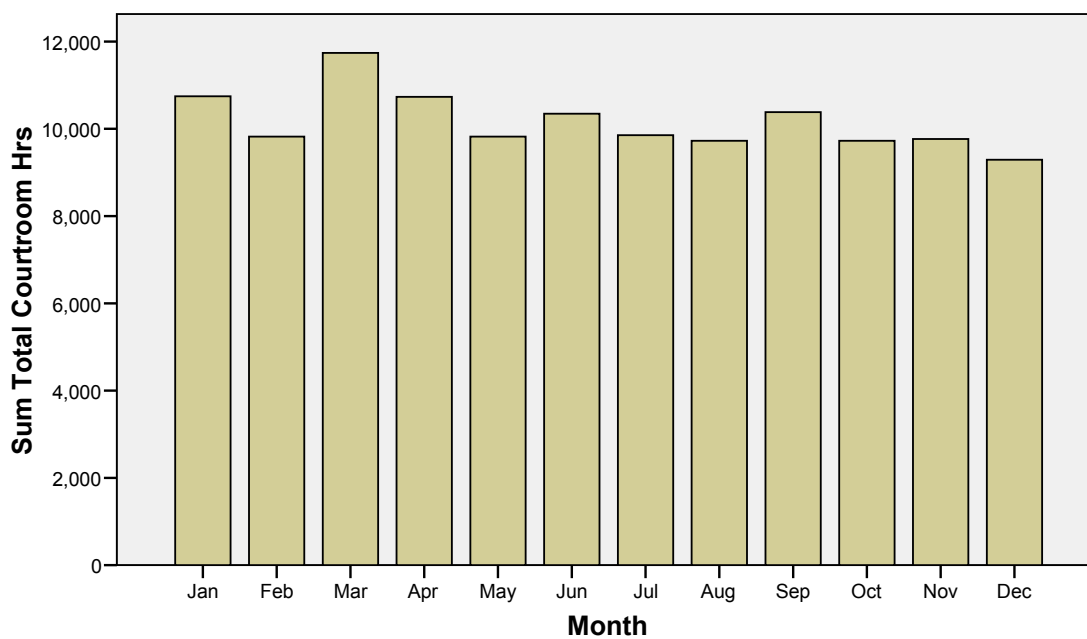


Figure 3

**Bankruptcy Judge Courtroom Use
Recorded for B-102 Reports**

2005 B-102 Data

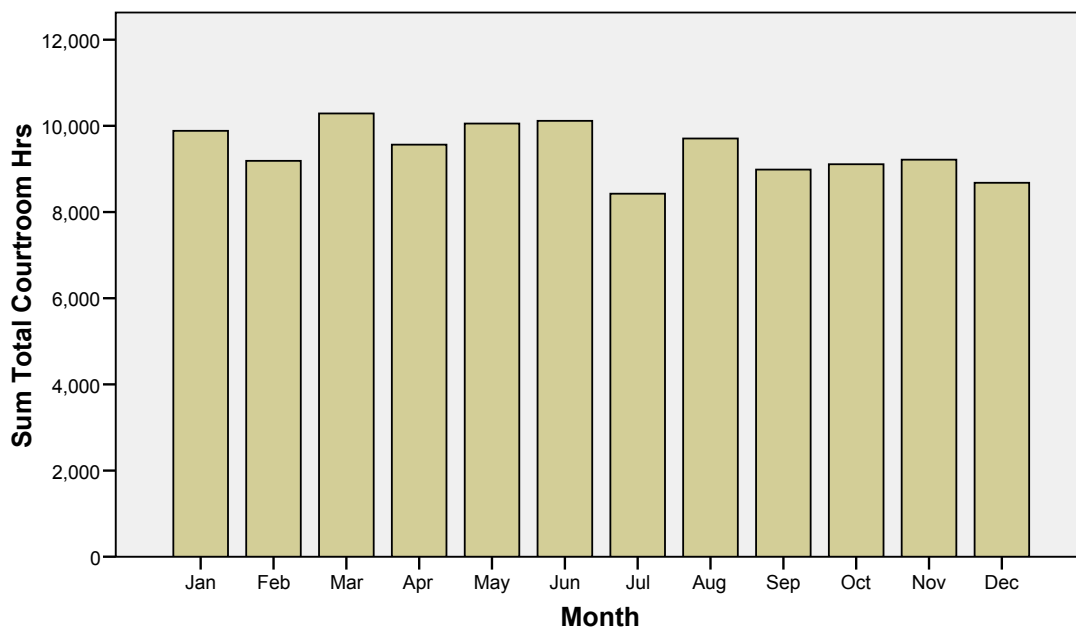


Figure 4

**Bankruptcy Judge Courtroom Use
Recorded for B-102 Reports**

2006 B-102 Data

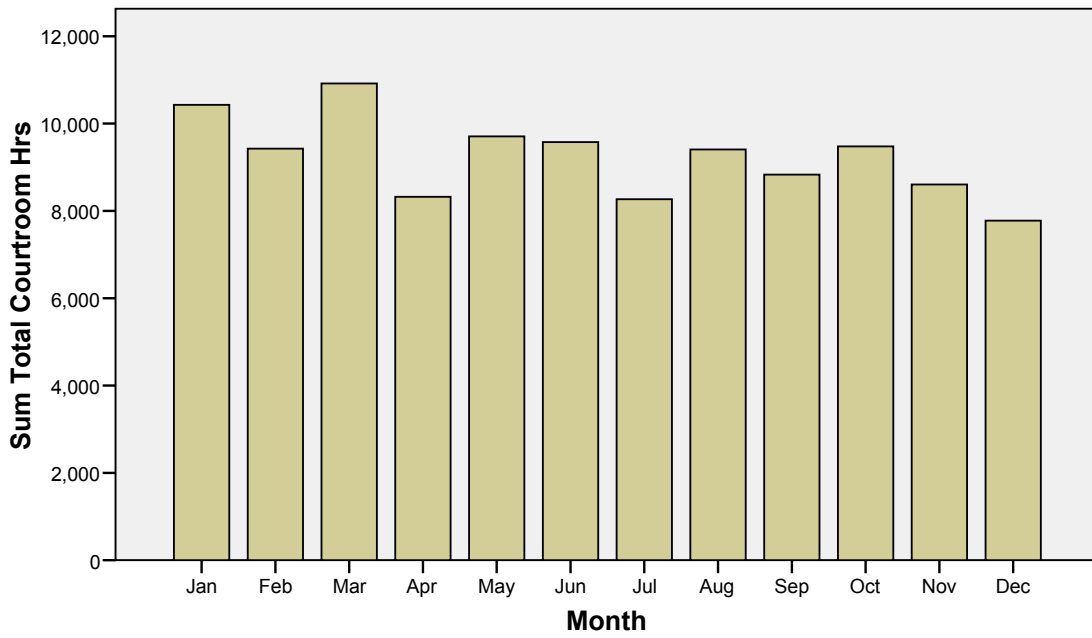


Figure 5

**Bankruptcy Judge Courtroom Use
Recorded for B-102 Reports**

2007 B-102 Data

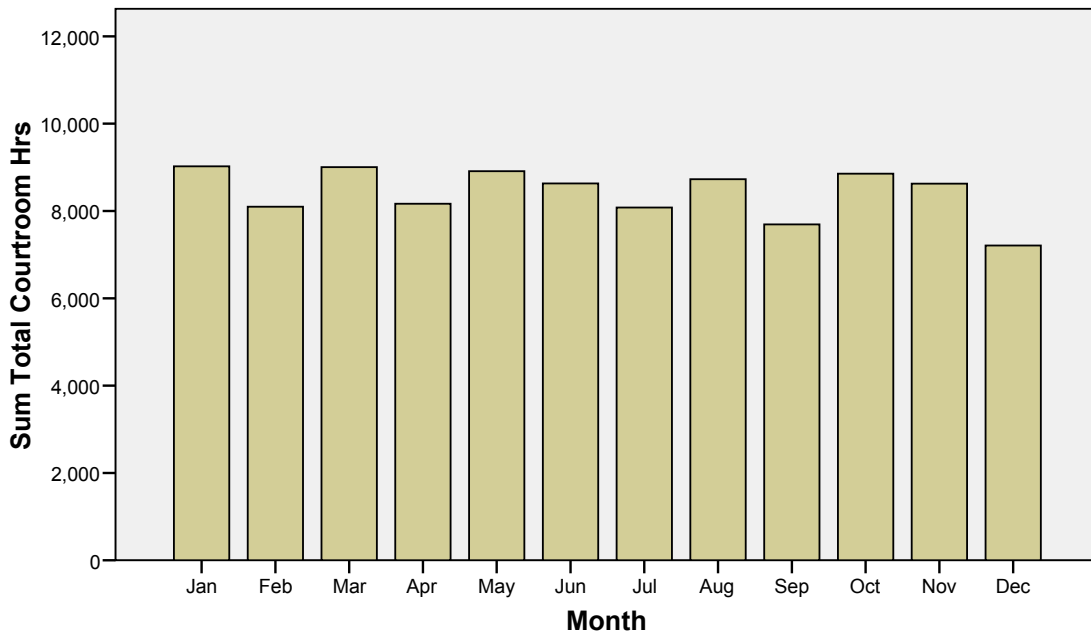


Figure 6

**Bankruptcy Judge Courtroom Use
Recorded for B-102 Reports**

2008 B-102 Data

